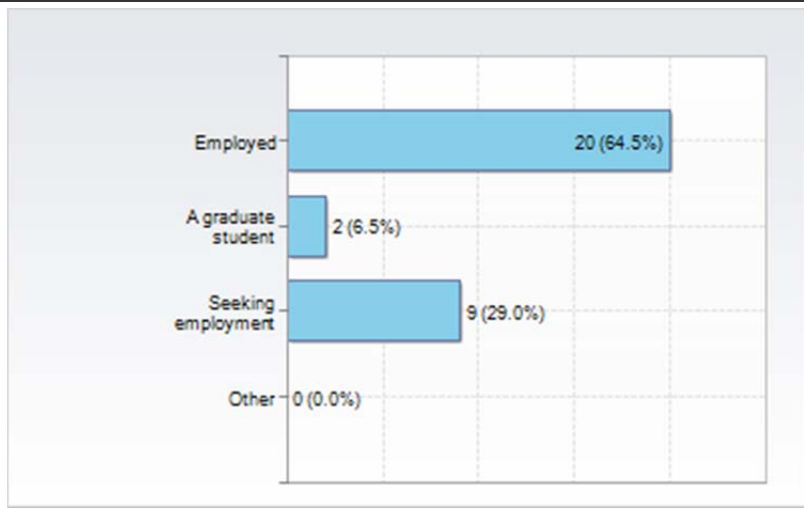
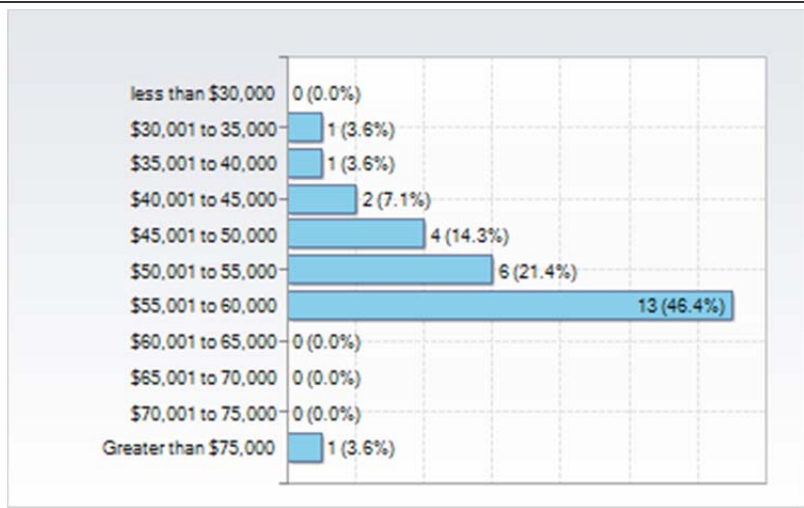


OQ1. Institution Specific Questions Following graduation I will be;



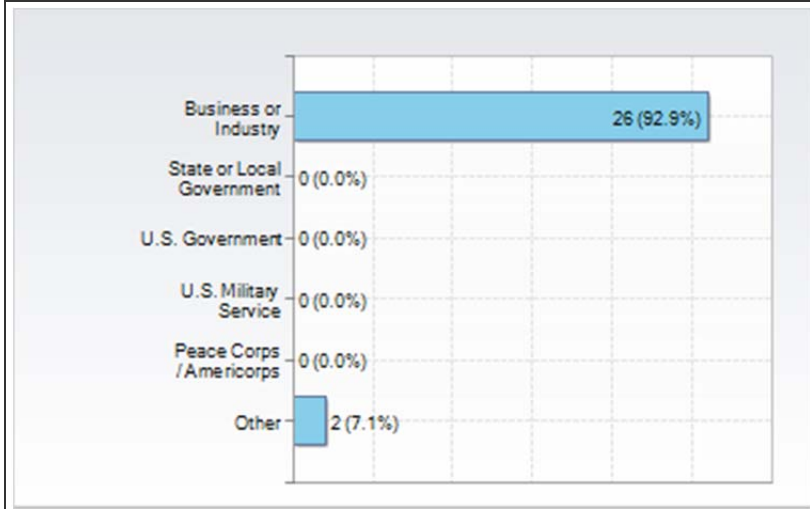
Answer	N	% of Total
Employed	20	64.5%
A graduate student	2	6.5%
Seeking employment	9	29.0%
Other	0	0.0%

OQ2. Institution Specific Questions If employed, my starting salary is in the range of;



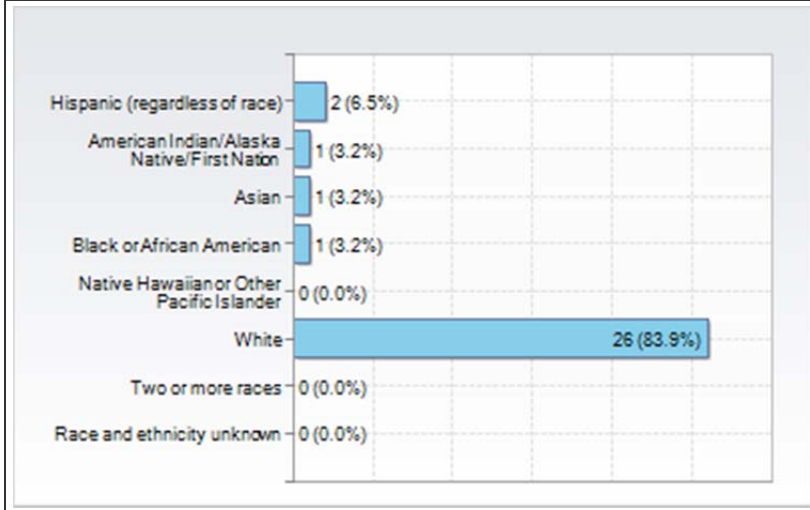
Answer	N	% of Total
less than \$30,000	0	0.0%
\$30,001 to 35,000	1	3.6%
\$35,001 to 40,000	1	3.6%
\$40,001 to 45,000	2	7.1%
\$45,001 to 50,000	4	14.3%
\$50,001 to 55,000	6	21.4%
\$55,001 to 60,000	13	46.4%
\$60,001 to 65,000	0	0.0%
\$65,001 to 70,000	0	0.0%
\$70,001 to 75,000	0	0.0%
Greater than \$75,000	1	3.6%

OQ3. Institution Specific Questions If employed, my employer is best described as;

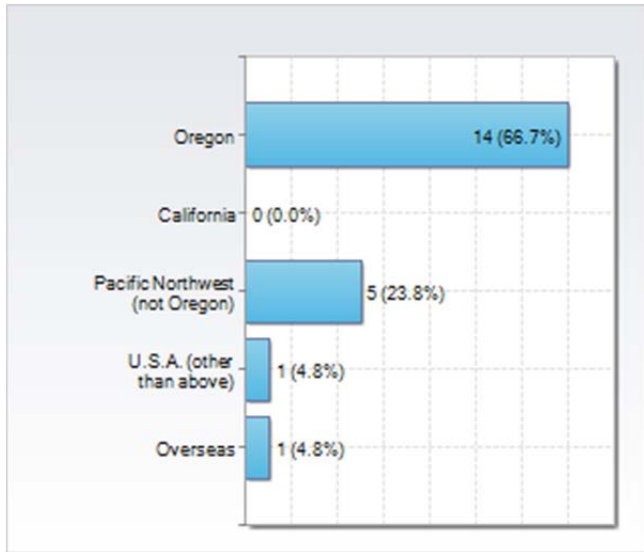


Answer	N	% of Total
Business or Industry	26	92.9%
State or Local Government	0	0.0%
U.S. Government	0	0.0%
U.S. Military Service	0	0.0%
Peace Corps / Americorps	0	0.0%
Other	2	7.1%

D004. Demographics: Race/Ethnicity (reporting only)



OQ5. Institution Specific Questions - If employed, my employer is located in;

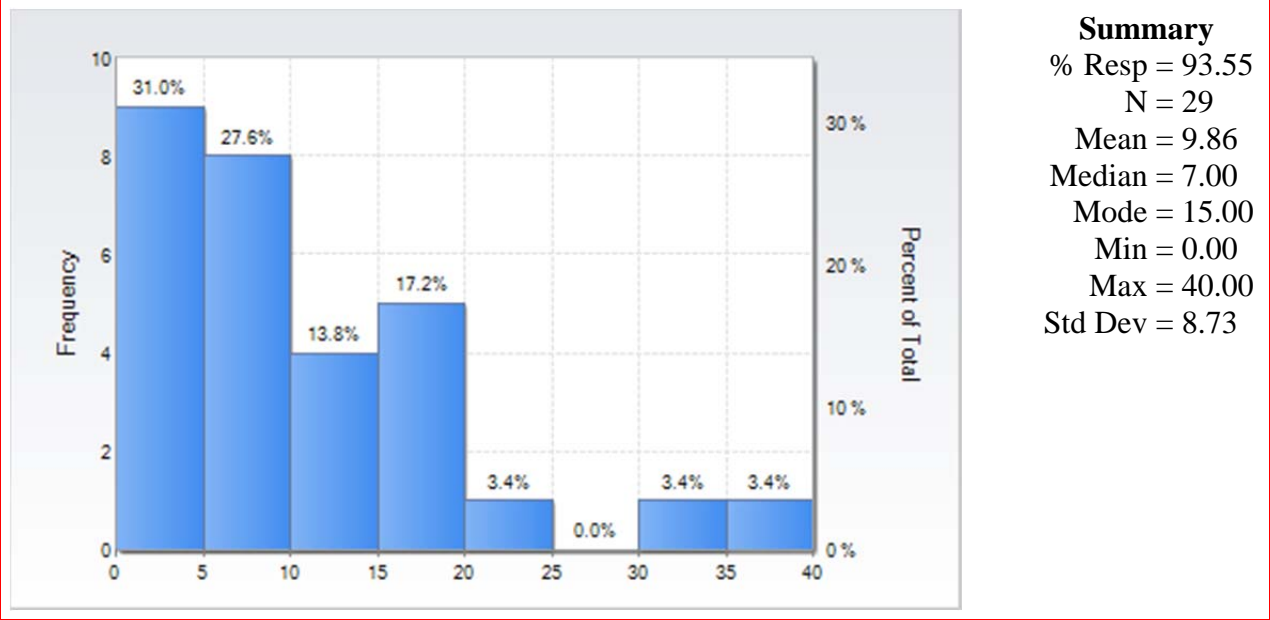


Oregon
California
Pacific Northwest (not Oregon)
U.S.A. (other than above)
Overseas

N	% of Total
14	66.7%
0	0.0%
5	23.8%
1	4.8%
1	4.8%

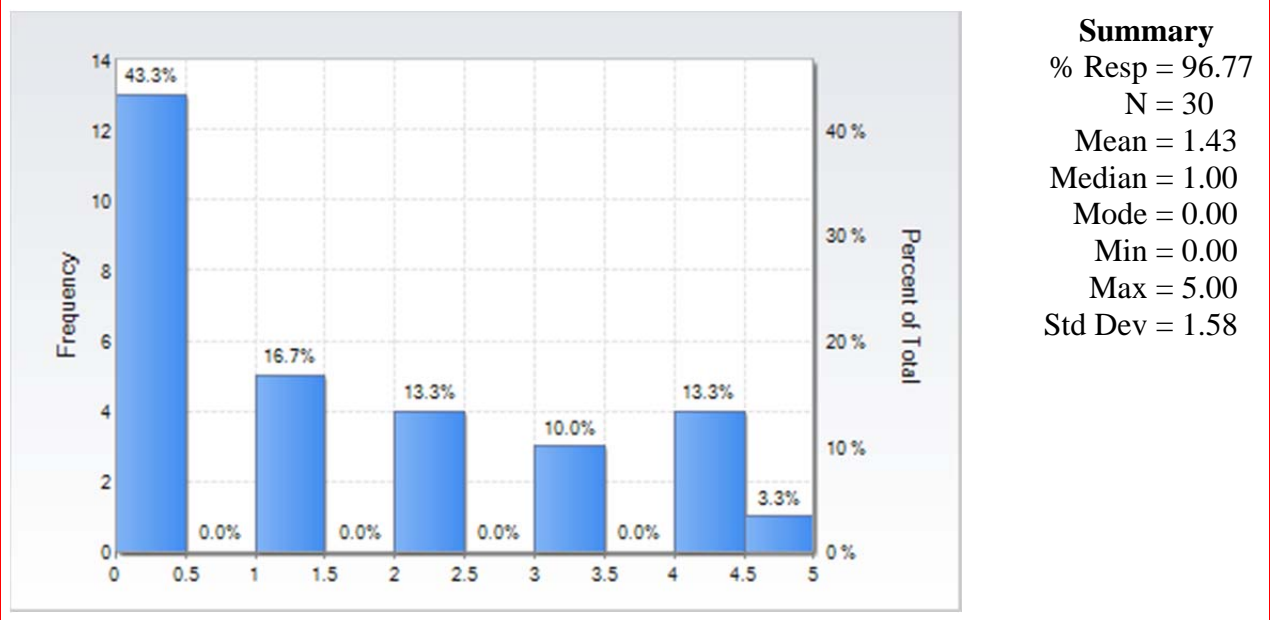
% = 67.7%
Resp
N=21

QQ6. Institution Specific Questions - If you are employed or still seeking employment, how many interviews have you had?



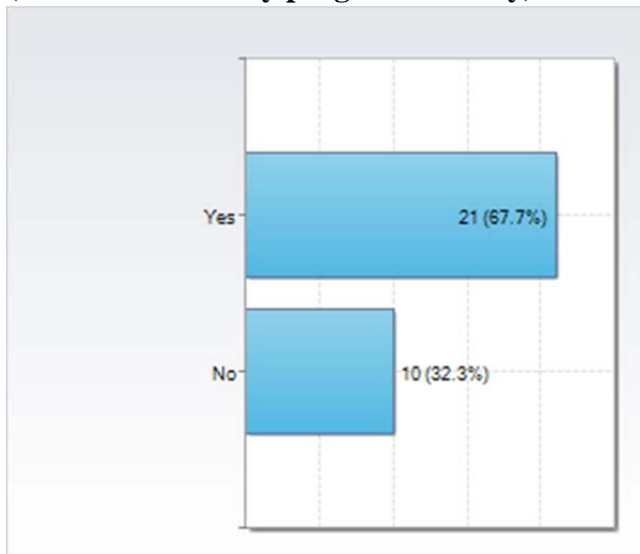
Summary
 % Resp = 93.55
 N = 29
 Mean = 9.86
 Median = 7.00
 Mode = 15.00
 Min = 0.00
 Max = 40.00
 Std Dev = 8.73

QQ7. Institution Specific Questions - If you are employed or still seeking employment, how many job offers have you had?



Summary
 % Resp = 96.77
 N = 30
 Mean = 1.43
 Median = 1.00
 Mode = 0.00
 Min = 0.00
 Max = 5.00
 Std Dev = 1.58

OQ9. Institution Specific Questions - I have been involved in some form of internship (work related to my program of study) that lasted at least three months?

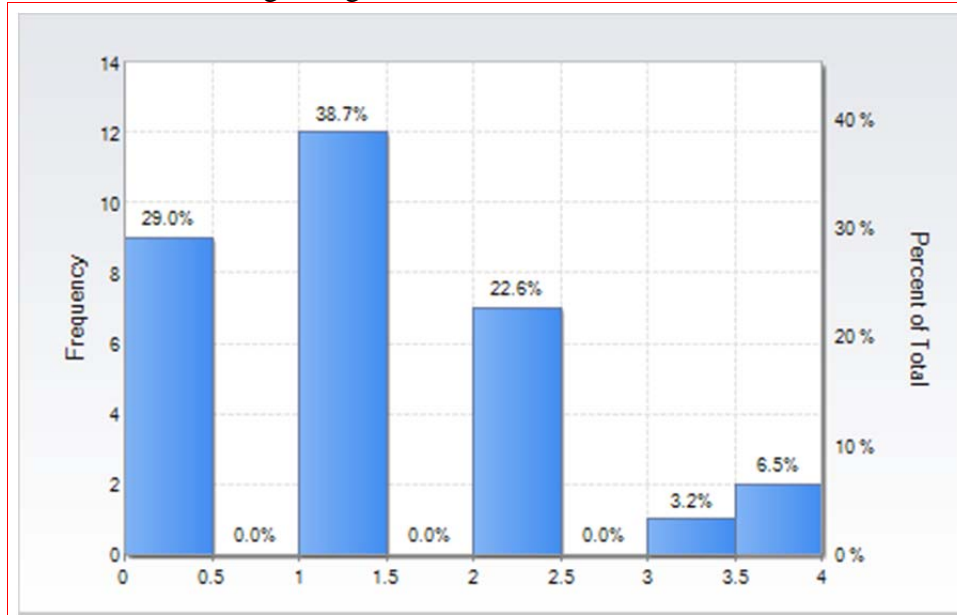


Yes
No

N	% of Total
21	67.7%
10	32.3%

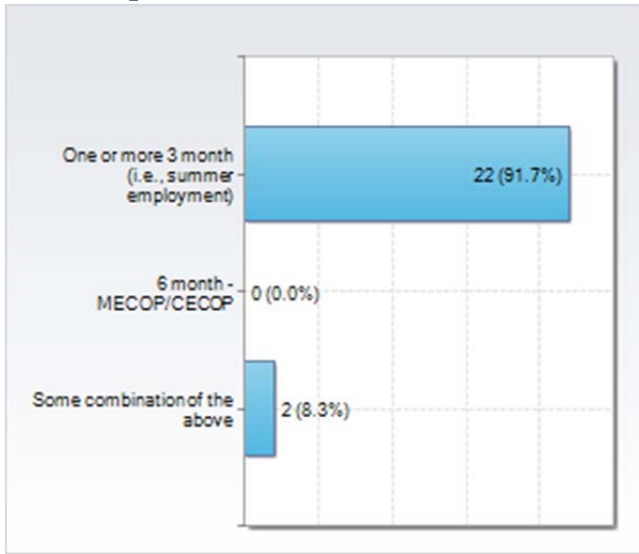
Resp
N=31
%=100.0%

OQ10. Institution Specific Questions - What is the total number of internships you have been involved in since beginning at OSU?



Summary
 % Resp = 100.00
 N = 31
 Mean = 1.19
 Median = 1.00
 Mode = 1.00
 Min = 0.00
 Max = 4.00
 Std Dev = 1.09

OQ11. Institution Specific Questions - If you were involved in internships, what type of internship was it?

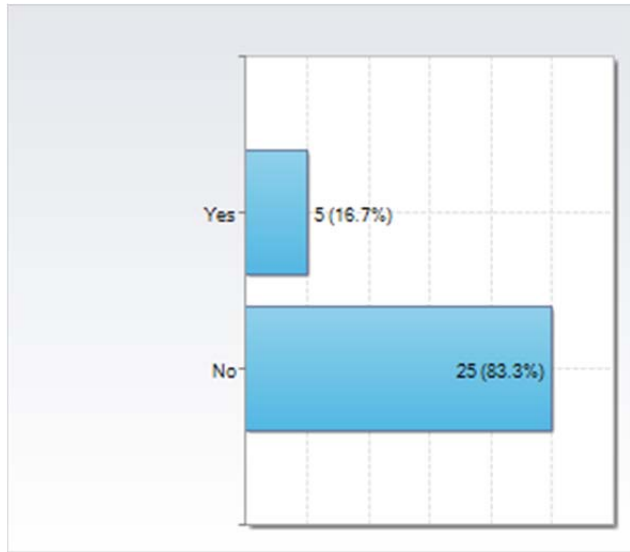


One or more 3 month (i.e., summer employment)
 6 month - MECOP/CECOP
 Some combination of the above

N	% of Total
22	91.7%
0	0.0%
2	8.3%

Resp = 77.4%
 N=24

OQ13. Institution Specific Questions - I have completed or plan to take the Fundamentals of Engineering exam



N % of Total
 Yes 5 16.7%
 No 25 83.3%

Resp = 96.8%
N=30