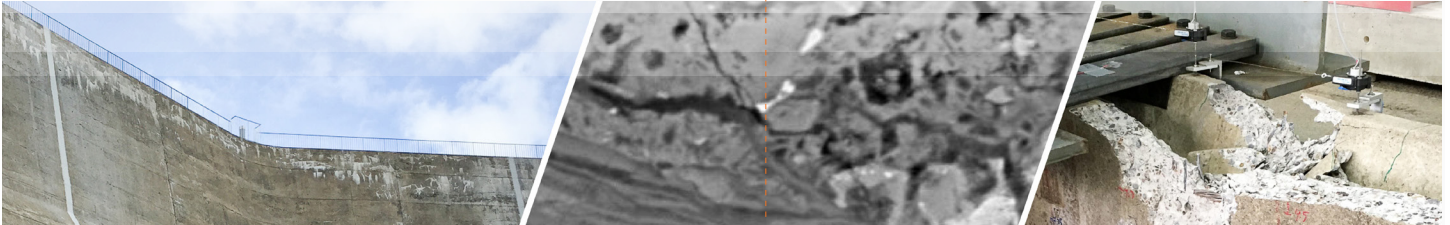


Civil & Construction Engineering
COLLEGE OF **ENGINEERING**



Service-Life Prediction of Concrete

3rd Meeting THE CORVALLIS WORKSHOPS

In association with Cement and Concrete Research
July 16-19, 2017

DOCTORAL SHORT COURSE July 9-14, 2017

DOCTORAL SHORT COURSE

July 9-14, 2017

LECTURERS

R. Douglas Hooton
Jason H. Ideker
O. Burkan Isgor
Karen Scrivener
Michael D.A Thomas
David Trejo
W. Jason Weiss

SPONSORS



OVERVIEW

The demand to produce durable long-lasting structures from concrete remains at the forefront of our most significant scientific and engineering challenges. Many efforts are aimed at the reduction of CO₂ from Portland cement production. However, part of sustainability is also ensuring serviceable structures throughout their intended lifespan and often well into years beyond that. This workshop and short course will bring together leaders from across the globe focused on the important issue of developing reliable service-life prediction tools verified by laboratory and field data to predict long-term performance of concrete structures. A particularly compelling facet of this 3rd installment of the Corvallis Workshops the partnership with Elsevier's Cement and Concrete Research to produce a series of technical journal articles authored by attendees and lead by invited speakers, to provide state-of-the-art knowledge and approaches and to illuminate future research areas needed in service-life prediction.

TOPICS

- Hydration
- Transport Properties
- Service-Life Modeling
- Chloride Ingress
- Carbonation
- Corrosion Initiation and Propagation
- Alkali-Aggregate Reactions
- Sulfate Attack
- Freeze-thaw Attack
- Combined forms of Attack
- New Cements
- Grand Challenges

SOCIAL PROGRAM

- Welcome Social | Kearney Hall
- Group Dinner | Gathering Together Farms, Philomath, Ore.

Oregon State
UNIVERSITY

3RD MEETING: CORVALLIS WORKSHOPS

In association with **Cement and Concrete Research**
July 16-19, 2017

TOPICS

- Service Life Modeling Approaches
- Field Verification
- Laboratory Data
- Verification
- Non-destructive Testing to aid in Service-Life prediction
- In-situ measurement techniques
- Destructive Testing
- Volume Change
- Corrosion
- Chloride Ingress
- Carbonation
- Alkali-Aggregate Reactions
- Internal and External Sulfate Attack
- Freeze-thaw attack
- Industry Perspectives

ORGANIZERS

- **Dr. Jason H. Ideker**, Oregon State University, Corvallis, Ore., USA
- **Prof. Karen Scrivener**, EPFL, Lausanne, Switzerland
- **Dr. Anthony Bentivegna, PE**, CTL Group, Skokie, Illinois

CONFIRMED SPEAKERS

- Ueli Angst
- Hans Beushausen
- Mette Geiker
- Ravindra Gettu
- Katerina Ioannidou
- Yoshifumi Hosokawa
- O. Burkan Isgor
- Tetsuya Ishida
- Kim Kurtis
- Kefei Li
- Jacques Marchand
- Robert Moser
- Jose Pacheco
- Radhakrishna Pillai
- Mohammad Pour-Ghaz
- Thomas Schumacher
- Karen Scrivener
- Michael D.A. Thomas
- Hong Wong

SOCIAL PROGRAM

- Group Hike | Mary's Peak (in the Coastal Mountain Range, minutes west of Corvallis)
- Evening Social | The Vue, Corvallis
- Group Social and Dinner | Lumos Vineyards, Philomath, Ore.

REGISTRATION AND APPLICATION DATES

CALL FOR ABSTRACTS

Abstracts for Short Talks or Poster Presentation Due*
March 8, 2017

Abstract Acceptance Notification
March 15, 2017

Extended Abstracts (4 page max)*
June 1, 2017

*Templates available at event site, listed below.

WORKSHOP AND SHORT COURSE REGISTRATION

Registration Opens | **January 30, 2017**

Register for both events and receive a \$100 reduction in the total combined price.

Short Course	By June 1, 2017	By June 15, 2017
Student	\$395	\$495
Industry/Other	\$495	\$595

Workshop	By April 15, 2017	By June 15, 2017
Industry	\$550	\$650
Faculty/ Research Scientist	\$450	\$550
Student	\$350	\$450



VENUE

CH2M Hill Alumni Center, Oregon State University
Corvallis, Oregon, USA
For more information, visit oregonstate.edu.

ACCOMMODATIONS

- Hotel rooms | The Hilton Garden Inn and Holiday Inn Express, Corvallis
- Dormitory lodging | Oregon State University (available for both events)

TO REGISTER AND FOR MORE INFORMATION VISIT:
thecorvallisworkshops.org

Oregon State
UNIVERSITY